



Your local Lifeline.

Since 1968, Lifeline Northern Beaches, Mosman to Kirribilli has been committed to crisis support and suicide prevention services to those most vulnerable in our community.

We are an organisation powered by ~ 680 volunteers who support those seeking our services and raise vital funds for our community programs.

Whilst to date we have answered over 1,000,000 of the nation's crisis calls, our local services from counselling, financial counselling, and support groups rely on the generosity of our community to ensure their sustainability.

Our community needs us. We need you.



Lifeline

NORTHERN BEACHES,
MOSMAN TO KIRRIBILLI



13 11 14



lifelinenb.org.au

Our Vision

An Australia free of suicide

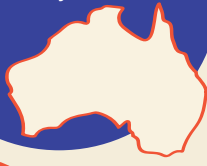
Our Purpose

We create connection with people in crisis and empower individuals and communities to be safe from suicide.

The Problem

65,000

Australians (estimated) attempt suicide each year ¹



9

Australians

die by suicide everyday



31.3%

of people who attempt suicide will repeat their attempt within 3.88 years²

60%

of deaths by suicide involve psychosocial factors such as loneliness, bereavement, social disruption, and social integration ¹

3x

Men are 3 times more likely to die by suicide than females

34%

of young people, aged 14-19 years, reported suicidal thoughts and behaviours in the last 12 months ³



¹ abs.gov.au/statistics/health/causes-death/causes-death-australia/

² pubmed.ncbi.nlm.nih.gov/17464707/

³ Aust Govt – Australian Institute of Family Studies

Our Footprint



Lifeline

NORTHERN BEACHES,
MOSMAN TO KIRRIBILLI



Avalon

Youth Counselling +15 years



Mona Vale



Narrabeen



Forestville



Brookvale



Manly



Neutral Bay



Bondi

Critical Incident Response

We also provide outreach services in aged care facilities, clinical and financial counselling in local NGOs, and critical incident response in the community.

Balgowlah

Headquarters for adult/youth clinical counselling, financial counselling, support groups and workplace and community training

Mosman

Adult clinical counselling



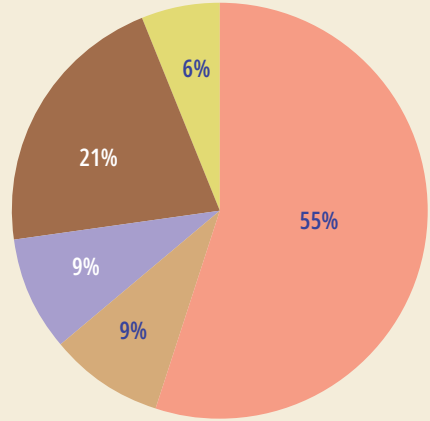
= Lifeline Shop and/or Book Depot/Fair

FY 25

We raise ~80% of our own funding.

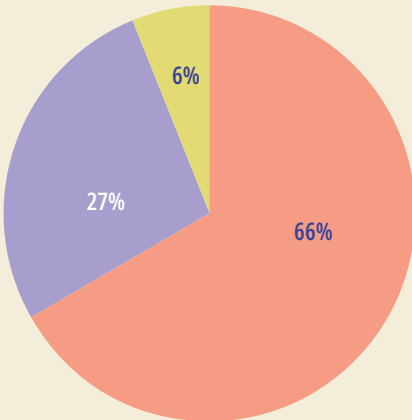


Source of revenue



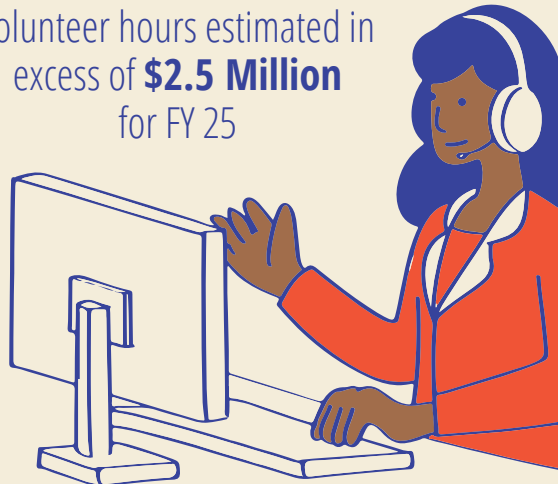
Retail Books Fundraising & Philanthropy Call Centre Funding (Government) Other

Total Investment in our Charitable Purpose \$2.4 Million



Crisis Support Centre
Community Programs
Training and Education

Total investment in our charitable purpose excludes the value of our volunteer hours estimated in excess of **\$2.5 Million** for FY 25



This excludes direct investment in our Community Awareness and Events initiatives.

Our Impact

Supporting Australia Crisis Support

46,167
calls answered

21,385
hours with
12,441 delivered
by volunteers

2,516
Suicide safety
plans issued

330
Emergency
interventions

57
Students commenced
training as Crisis
Supporters

36
Students
accredited

Supporting the Northern Beaches, Mosman to Kirribilli Community

Clinical Intervention

1,634
total individual
counselling sessions
(excluding support groups)

84%
are delivered
by volunteer
counsellors

51%
of sessions were
delivered for
\$0-\$20 per session

13%
of our clients were from
the CALD community
from **23 nations**
(89% of these were
women)

85%
of the reasons for
seeking help were
known risk factors
for suicide

Outcome
90%
of Help Seekers reported
an increased feeling of
emotional resilience and
coping confidence

Primary Prevention

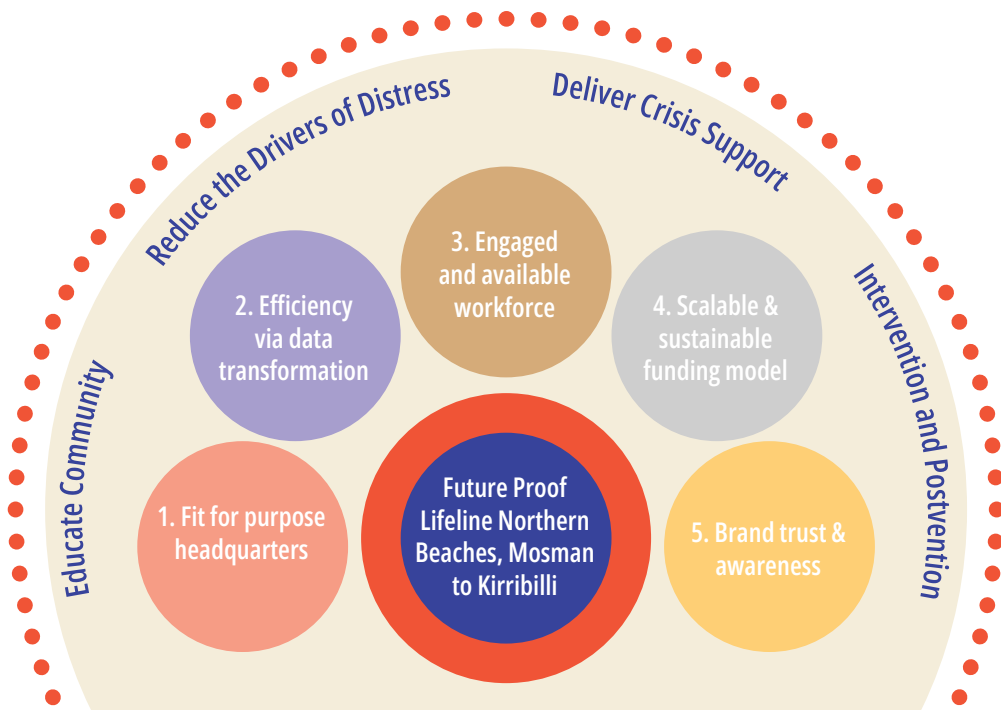
**Financial
Counselling**
Financial Advocacy
346 New Enquiries +21% YOY
180 Total Clients
48% of our referrals
are from vulnerable
pathways

**Aged Care
Volunteer Visitors
Scheme**
Companion Program
33
Residents from
Aged Care Homes
supported

**Workplace and
Community Training**
Building emotional safety
40 Workshops
+33% YOY
638 participants
+17.40%

Thank you - only with your ongoing support can we continue to meet the increasing demand for Crisis Support and Suicide Prevention services in our community.

FY 25-28 Strategic Priorities



“When a person has hope and connection
it takes suicide off the table.”

Jackie Shea, Counsellor

We acknowledge the first nations people throughout Australia and the valuable contributions they make to our culture and community. We pay our respects to their clans, their elders past, present.

We acknowledge the individual and collective contributions of those with a lived and living experience of mental ill-health and suicide, and those who love, have loved and care for them. Each person's journey is unique and strengthens our commitment to helping those in need, with mental health support, suicide prevention and compassion for all.



FIND OUT MORE



13 11 14



lifelinenb.org.au